



John T. Peters
Executive Director

We strongly believe the cleanliness and appearance of our district reflect our shared values and commitment to excellence. Working together to ensure that our community is at its cleanest will not only enhance our quality of life but also reinforce our sense of pride and connection as neighbors and fellow citizens. Please see the following information and if you have any questions or comments, please feel free to contact us.

RESIDENTIAL GARBAGE

Residential Garbage should be disposed of per your landlord's suggestions. This might be through a garbage chute or into an external container provided by the landlord. Alternatively, it may be suggested that you place your trash into the City's blue trash cans behind your building. The only rule is you may NOT place your garbage in, on, or near the garbage cans on Main Street.

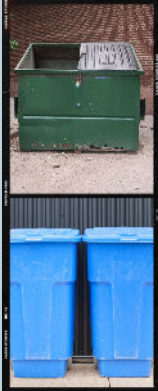


PICKUP ON TUESDAY & FRIDAY

So you should take out your garbage on Monday night and Thursday night.

COMMERCIAL GARBAGE

Commercial Garbage should be put into the BLUE trash cans behind the building, or if you will be generating significant trash, you should secure a commercial container at your expense and for pickup times you arrange. NOTE: You should NOT be placing your garbage in or near the garbage cans on Main Street. Doing so will result in a fine from the City.



PICKUP ON TUESDAY & FRIDAY (Blue Cans)

So you should take out your garbage on Monday night and Thursday night.

COMMERCIAL & RESIDENTIAL RECYCLING

This includes Glass, Tin, Aluminum, and Plastic, plus corrugated cardboard, newspaper, and junk mail. Bottles and cans should be placed in clear plastic bags and corrugated cardboard should be broken down, stacked, and tied so as not to fly around when windy. Please DO NOT leave loose bottles on the ground as they often roll around and are dangerous. These items should be placed on Main Street, the evening before pickup days.



PICKUP ON TUESDAY & FRIDAY

So you should take out your garbage on Monday night and Thursday night.

RUBBISH

This includes a couple of large items at once – like recliners, mattresses, furniture, file cabinets, etc. This is NOT for bulk “move outs” – see below. These items (in very limited quantity, i.e. one or 2 items) should be placed on Main Street the night before pickup ONLY.



Pickup Days:

South of Mercer = The “South pickup” on the 1st and 3rd Wednesday of the month.
North of Mercer = The “North pickup” on the 2nd and 4th Wednesday of the month.

WHITE GOODS

This includes any metal item or appliance. For example, a stove, refrigerator, washer, dryer, hot water heater, air conditioner, humidifier, metal desk, metal file cabinet, metal piping, swing set, etc.

To dispose of a white good, you will first need to visit the Sanitation Office at 120 East Broadway and purchase a sticker for \$10.00 (Check or Money Order Only) per item at which time you will receive an appointment for collection. Or you can send a check or money order to the Sanitation Dept., 65 Central Avenue, Hackensack, NJ 07601 along with a note stating your address and the item(s) to be collected. Upon receipt of your request the Sanitation Dept. will issue a sticker which will be sent to you.



MOVING OUT? – IMPORTANT!

When you vacate your apartment, you must coordinate with the landlord for disposal of your unwanted furniture and other large items. These CANNOT be left out on the curb or behind a building. Doing so may result in loss of security deposit, fine, or both. Bulk “Move-out” items, like furniture, carpets, mirrors, etc. are the responsibility of the tenant and landlord. Any such items left on the street will be tagged and a summons issued by the City. For your information, there are numerous cameras on many of the buildings. We mention this only so you are aware of the installed security.



REGULAR MAIN STREET GARBAGE PICKUP

Each morning, the MSBA’s team (not the City) empties the trash cans on Main Street. These are made available for people walking on Main Street so they may throw out their hand-held trash and recycling. THESE CANS ARE NOT FOR Residential and Commercial garbage. Residents and businesses should not place their trash in, on, or near these cans. Doing so could result in a fine from the City.

